

## Tubular Handles

### with Movable Handle Legs

#### SPECIFICATION

##### Type

- Type **A**: Mounting from the back (threaded blind bore)

Handle tube

Aluminum (wall thickness 1.5)

Handle legs

Zinc die casting

Powder coated

Tube / handle legs **SW**

Powder coated

Black, RAL 9005, textured finish

Cover

Plastic, black, matte finish

Tube **ELS**

Anodized, natural color

Handle legs

Black, RAL 9005, textured finish

Cover

Plastic, black, matte finish

Tube **ELG**

Anodized, natural color

Handle legs

Silver, RAL 9006, textured finish

Cover

Plastic, light gray, matte finish



#### INFORMATION

The spacing of the attachment holes of the tubular handles GN 333.2 is adjustable.

Further handle legs can be added for very long tubular handles. Individual handle legs for tubular handles Ø 28 (type A) are available under GN 333.8 (see page 501).

Tubular handles GN 333.2 are supplied unassembled.

#### ACCESSORY

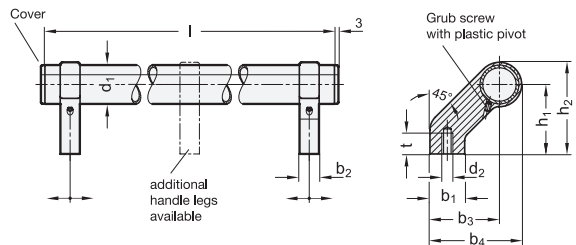
- Handle legs GN 333.8 (see page 501)

#### ON REQUEST

- Special lengths

#### TECHNICAL INFORMATION

- Load rating information (see page A35)



#### GN 333.2-SW

Description	d1	l	b1	b2	b3	b4	h1	h2	t	⚖
		±0.25							min.	
GN 333.2-28-242-A-SW	28	242	25	14	50	66	50	66	15	390
GN 333.2-28-292-A-SW	28	292	25	14	50	66	50	66	15	410
GN 333.2-28-392-A-SW	28	392	25	14	50	66	50	66	15	470
GN 333.2-28-492-A-SW	28	492	25	14	50	66	50	66	15	520
GN 333.2-28-592-A-SW	28	592	25	14	50	66	50	66	15	700

#### GN 333.2-ELS

Description	d1	l	b1	b2	b3	b4	h1	h2	t	⚖
		±0.25							min.	
GN 333.2-28-242-A-ELS	28	242	25	14	50	66	50	66	15	400
GN 333.2-28-292-A-ELS	28	292	25	14	50	66	50	66	15	400
GN 333.2-28-392-A-ELS	28	392	25	14	50	66	50	66	15	462
GN 333.2-28-492-A-ELS	28	492	25	14	50	66	50	66	15	600
GN 333.2-28-592-A-ELS	28	592	25	14	50	66	50	66	15	600

#### GN 333.2-ELG

Description	d1	l	b1	b2	b3	b4	h1	h2	t	⚖
		±0.25							min.	
GN 333.2-28-242-A-ELG	28	242	25	14	50	66	50	66	15	380
GN 333.2-28-292-A-ELG	28	292	25	14	50	66	50	66	15	392
GN 333.2-28-392-A-ELG	28	392	25	14	50	66	50	66	15	470
GN 333.2-28-492-A-ELG	28	492	25	14	50	66	50	66	15	520
GN 333.2-28-592-A-ELG	28	592	25	14	50	66	50	66	15	560